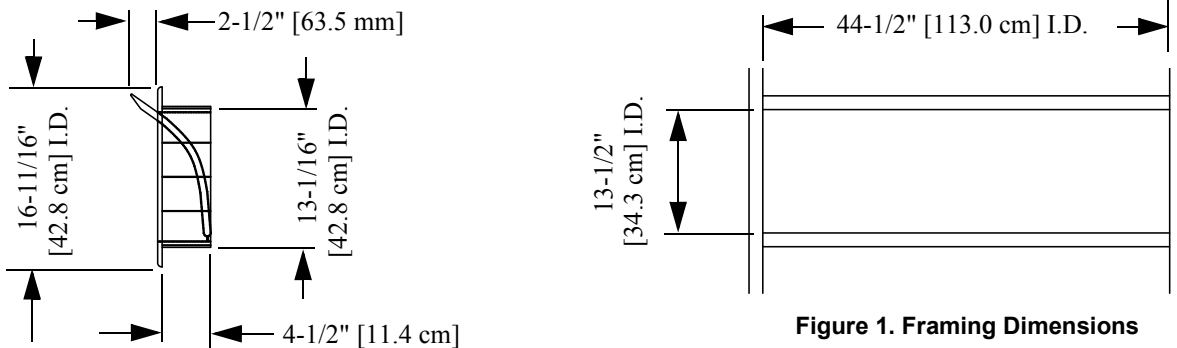




Directional Curved Sidewall Air Inlet (PN 53533-5)

Airflow Capacity: 3474 cfm @ .10 inch S.P.

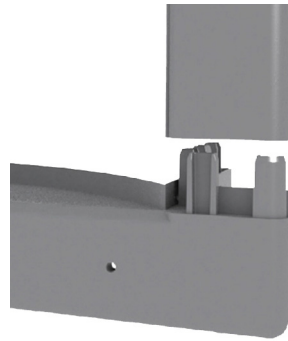
Framed Opening



Assembly



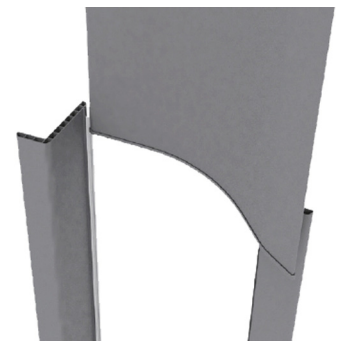
Step 1. Install frame Profile with Brush Seal on to side Endcap.



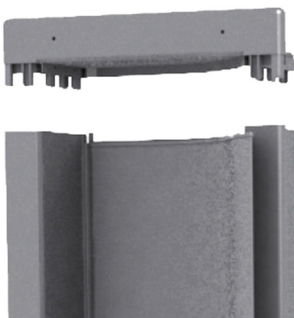
Step 2. Install long frame section with hinge profile onto Side Endcap



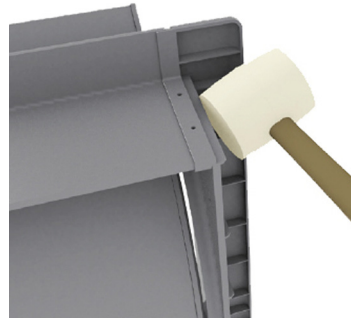
Step 3. Slide Plastic Hinge on to Inlet Hinge Profile.



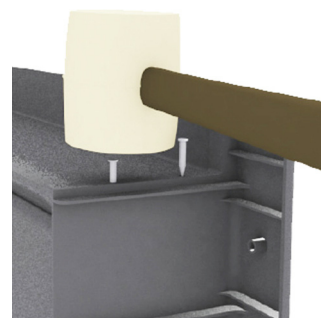
Step 4. Slide Curved Louver Blade on to Plastic Hinge



Step 5. Install the other Side Endcap.

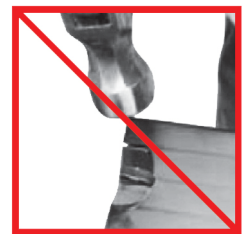


Step 6. Use a Rubber Mallet to Secure the Endcaps in place.



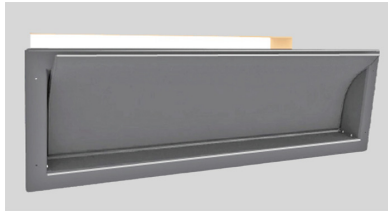
Step 7. Use a Rubber Mallet to install eight Plastic Nails.

WARNING



Use of a Metal Hammer can result in damage to Inlet Housing!

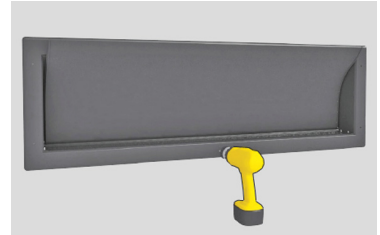
Installation



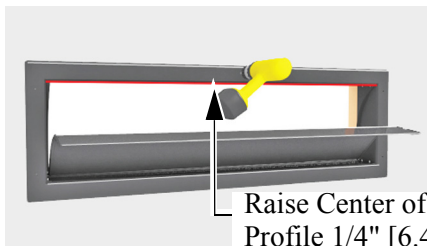
Step 1. Install the Inlet into the framed opening.



Step 2. With the Inlet in place, fasten the Endcaps securely using four 2-Inch Screws.

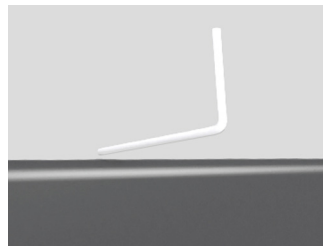


Step 3. Fasten the Profile with one Screw in the Center. Be sure it is straight across bottom.



Raise Center of Profile 1/4" [6.4 mm]

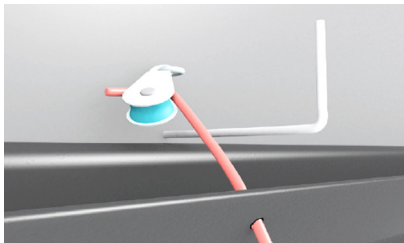
Step 4. Push slightly up on Center of Profile approximately 1/4" [6.4 mm]. Once in place, fasten to the wall. Make sure Louver opens and shuts easily without binding.



Step 5. Install Shut-Off just above the Inlet Flange at the Center. Avoid the Pulling Cable.



Step 6. Install a Winch Block or Pulley at the top of the Inlet.



Step 7. Pull String through hole in Louver, then through block or Pulley towards direction of pull.



Step 8. Caulk all four sides of Inlet after installation for improved Inlet Performance

WARNINGS
Please read before installing



Do Not overtighten Screws! Tighten until flush. **Do Not** dent Housing.



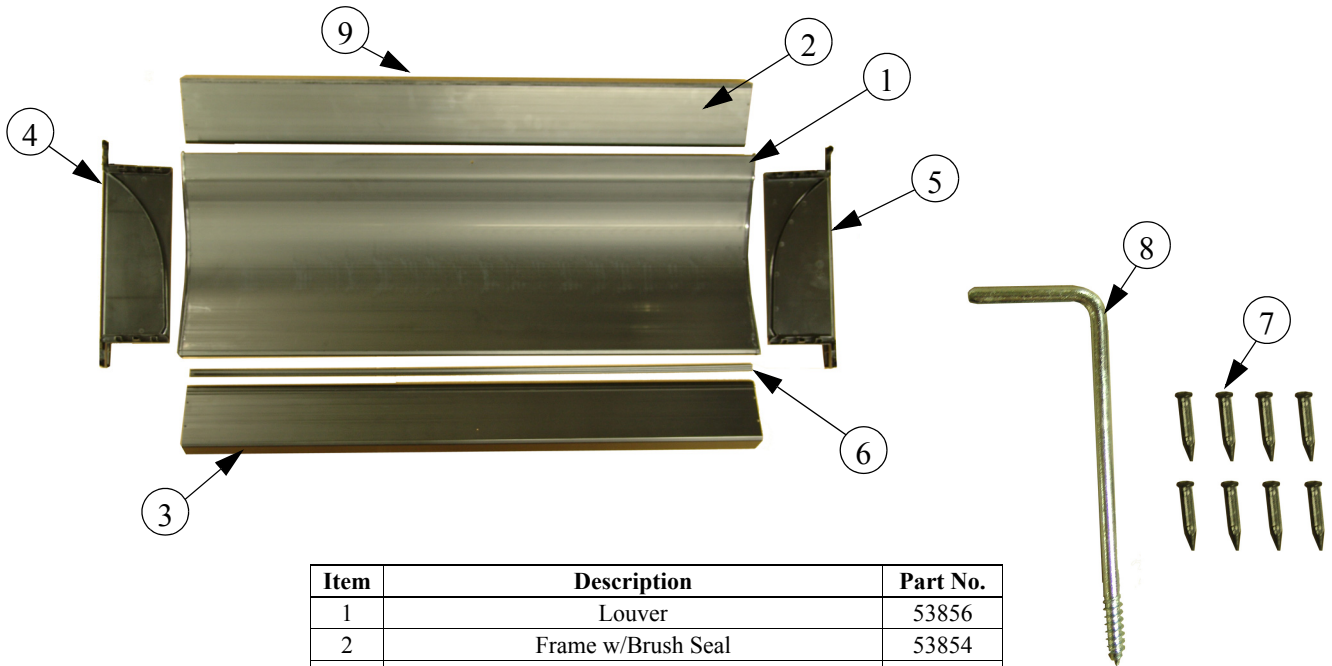
DirectAire Shut-Off Installation (Placed at top and center of Inlet)



A Wind Deflector must be installed to protect from direct sunlight. The Deflector opening(s) must be equal or larger than the Inlet opening.

Note: After Actuator is installed, re-adjust all Inlets to make sure they shut properly.

Part Numbers



| Item | Description | Part No. |
|---|--------------------------|----------|
| 1 | Louver | 53856 |
| 2 | Frame w/Brush Seal | 53854 |
| 3 | Frame w/Hinge | 53857 |
| 4 | Left Hand End Cap Frame | 53853 |
| 5 | Right Hand End Cap Frame | 53852 |
| 6 | Hinge | 53855 |
| 7* | Plastic Nails | 53855 |
| 8 | L-Screw Hook | 51511 |
| 9** | Brush Seal | 54792 |
| * Qty 40 Nails (8 per Inlet) | | |
| **Qty 18' [5.49m] (3.6' [1.1m] per Inlet) | | |



Contact your nearby Chore-Time distributor or representative for additional parts and information.

CTB Inc.

P.O. Box 2000 • Milford, Indiana 46542-2000 • U.S.A.

Phone (574) 658-4101 • Fax (877) 730-8825

E-Mail: ctb@ctbinc.com • Internet: <http://www.ctbinc.com>